

NEW

HILCLARE

LIGHTING MANUFACTURER

— LED BY DESIGN —

EFD-3

Recessed Emergency Downlight



Self contained recessed emergency downlight, with unique 'twist to focus' lens.
Suitable for internal applications

Key features

- ✓ 3 Hour Duration
- ✓ IP44 or IP65
- ✓ Non- maintained or maintained operation
- ✓ LifePO4 Battery
- ✓ Fully compliant to 60598-2.22
- ✓ DALI/Self test in compliance with EN62034
- ✓ Twist lens open area to escape route lens
- ✓ 150 & 200 Lumen Output



Escape Route Lens



Open Area Lens



☎ 0161 274 3626

✉ sales@hilclare.com

www.hilclare.com

Light Engine and Control Gear Options

- **Colour Temperature:** 5700K
- **Lumen output range:** 150 & 200 Lumens
- **Supply voltage:** 220-240V AC 50/60Hz
- **Supply power:** 2.0W
- **Charge power:** 1.1W
- **Battery:** 3.2V 3.0Ah LifePO4
- Fault analysis LED indicator

Materials and Environment

- **IP Rating:** IP44 & IP65
- **IK Rating:** IK05
- **Weight:** N/A
- **Body:** White (RAL9003) polycarbonate body
- **Diffuser:** Polycarbonate
- **Operating temperature:** 5°C to 45°C
- **Options:** Available in RAL9007 (Silver Gloss), RAL 7015 (Dark Grey) and RAL 9005 (Matt Black)

Installation Notes

- **Mounting:** Recessed installation to ceiling
- **Installation:** Spring clip installation method
- **Diameter cut out:** ø64-78mm
- **Terminals:** 1 x 2.5mm
- **Minimum Ceiling Void:** 105mm

Spacing Table

Open Area Lens

Mounting Height (m)	Spacing (m) at Min. 0.5 Lux	Spacing (m) at Min. 1.0 Lux
2.5	10.0	8.9
3.0	11.3	9.8
3.5	12.5	10.5
4.0	13.5	11.3

Corridor Lens

Mounting Height (m)	Spacing (m) at Min. 0.5 Lux	Spacing (m) at Min. 1.0 Lux
2.5	21.1	19.5
3.0	24.3	22.4
3.5	27.4	25.0
4.0	30.4	27.4

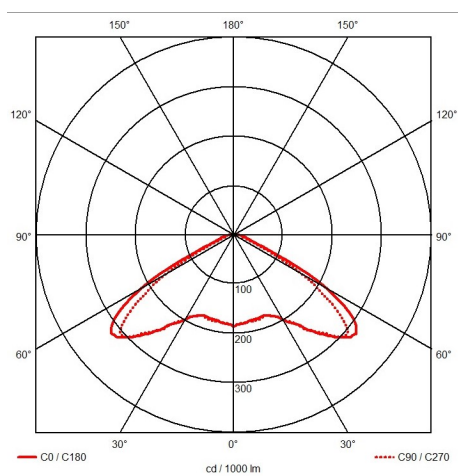


Specification

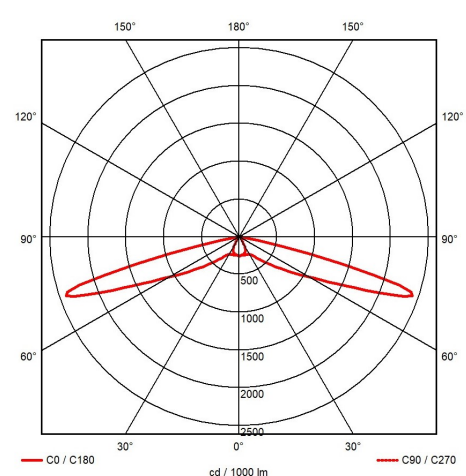
To specify state: Self contained 3 Hour emergency downlight, recessed ceiling mounted luminaire with 'twist to focus' lens from open to escape route lens option.

As per- Hilclare Lighting, EFD-3

Photometrics

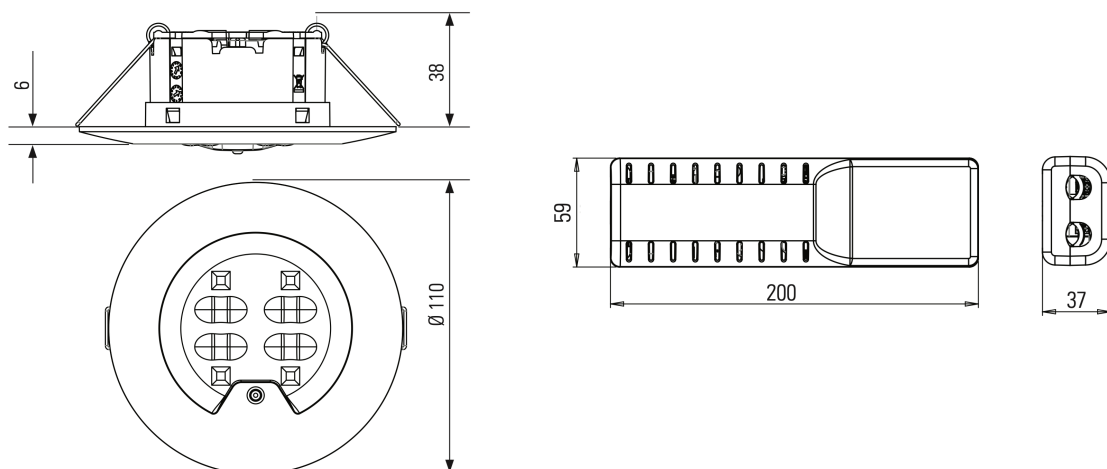


Open Area Lens



Escape Route Lens

Dimensions



Product Number

Part No	Description	Lumen Output (Lm)	System Power (W)	Efficacy (LM/cW)
EFD33H/WH	Recessed downlight, IP44, Open Area lens	150	2.0	75
EFD33H65/WH	Recessed downlight, IP65, 'Twist to Focus' lens	200	2.0	100

For DALI option suffix 'DA' , e.g. EFD33H/WH becomes EFD3H3HDA/WH

For self test option suffix 'STEM', e.g EFD33H/WH becomes EFD33HSTEM/WH

For further information, contact our Customer Service Department on 0161 274 3626 or email sales@hilclare.com
Lm/cW = luminaire lumens per circuit watt.

Accessories

Part No	Description
EFD3/RT/BLK	EFD-3 round trim in Matt Black (RAL9005)
EFD3/RT/GRY	EFD-3 round trim in Dark Grey (RAL7015)
EFD3/RT/SIL	EFD-3 round trim in Silver Gloss (RAL9007)
EFD3/ST/BLK	EFD-3 square trim in Matt Black (RAL9005)
EFD3/ST/GRY	EFD-3 square trim in Dark Grey (RAL7015)
EFD3/ST/SIL	EFD-3 square trim in Silver Gloss (RAL9007)
EFD3/BATTERY	EFD-3 battery 3.2V 3Ah

