

NEW

HILCLARE

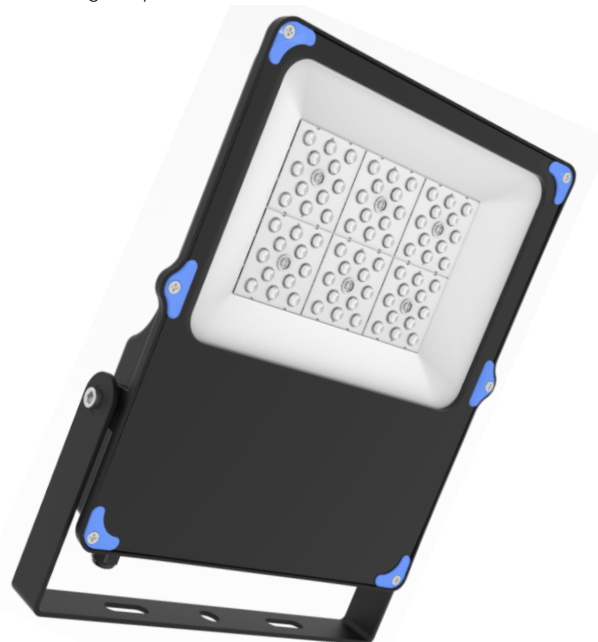
LIGHTING MANUFACTURER

— LED BY DESIGN —

Phasor

LED Floodlight

Range of floodlights with efficacy up to 141 lm/W



Asymmetric
or 90 ° lens
option
available

The Phasor is perfect for a wide range of applications including external areas of warehouses, factories, logistic centres, parking zones etc.

Key Features

- ✓ Efficacy up to 141 lm/W
- ✓ Available 30W-300W
- ✓ Lumen outputs from 4,100 to 41,000 lumens
- ✓ Lumileds LEDs
- ✓ CRI 80
- ✓ Pre-wired with 80cm flex
- ✓ IP66
- ✓ IK08
- ✓ 90 degree and asymmetric lens options
- ✓ 5 year warranty
- ✓ Surge protection as standard (10/6kV)
- ✓ Lifetime 50,000 hours



Version 1

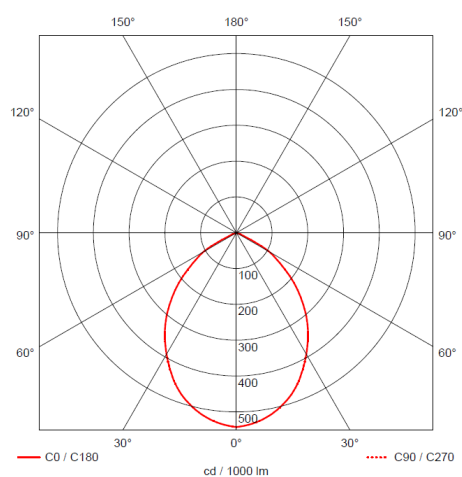
+44 (0) 161 274 3626

sales@hilclare.com

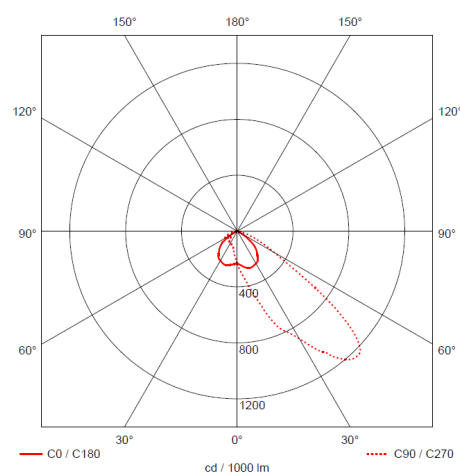
www.hilclare.com

Code	Luminaire lumens (lm)	Wattage (W)	Efficacy (lm/w)	Colour temperature	IP rating	IK rating	Lens type
FLP30LED4090	4122	30	137.4	4000K	IP66	IK08	90°
FLP30LED40AS	4083	30	136.1	4000K	IP66	IK08	Assymetric (30°x90°)
FLP50LED4090	6799	50	136.0	4000K	IP66	IK08	90°
FLP50LED40AS	6760	50	135.2	4000K	IP66	IK08	Assymetric (30°x90°)
FLP100LED4090	13643	100	136.4	4000K	IP66	IK08	90°
FLP100LED40AS	13666	100	136.6	4000K	IP66	IK08	Assymetric (30°x90°)
FLP150LED4090	20552	150	137.0	4000K	IP66	IK08	90°
FLP150LED40AS	20945	150	141.4	4000K	IP66	IK08	Assymetric (30°x90°)
FLP200LED4090	27353	200	136.7	4000K	IP66	IK08	90°
FLP200LED40AS	27321	200	136.6	4000K	IP66	IK08	Assymetric (30°x90°)
FLP300LED4090	41100	300	137.0	4000K	IP66	IK08	90°
FLP300LED40AS	41130	300	137.1	4000K	IP66	IK08	Assymetric (30°x90°)

Light distribution curves -100W variant example



FLP100LED4090
90°



FLP100LED40AS
30° x 90°



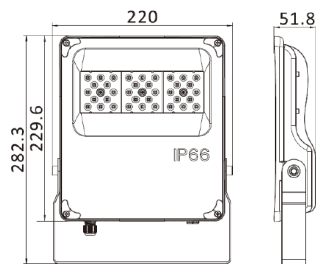
Version 1

+44 (0) 161 274 3626

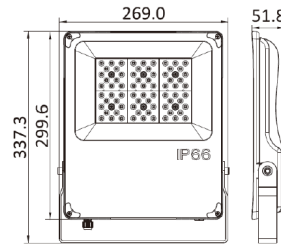
sales@hilclare.com

www.hilclare.com

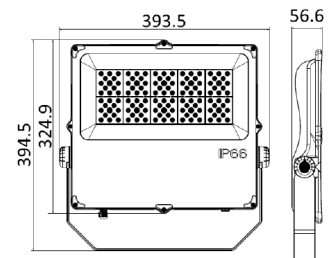
Variant	Length (mm)	Width (mm)	Depth (mm)	Weight (kg)
Phasor 30W	282.3	220	51.8	1.9
Phasor 50W	337.3	269	51.8	2.8
Phasor 100W	394.5	393.5	56.6	4.4
Phasor 150W	445.5	392.5	56.8	5.2
Phasor 200W	497.5	392.5	58.8	7
Phasor 300W	503.5	545.6	64.8	7.2



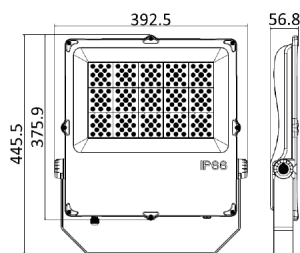
30W



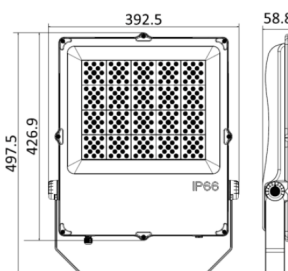
50W



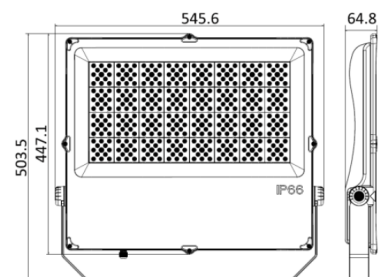
100W



150W



200W



300W